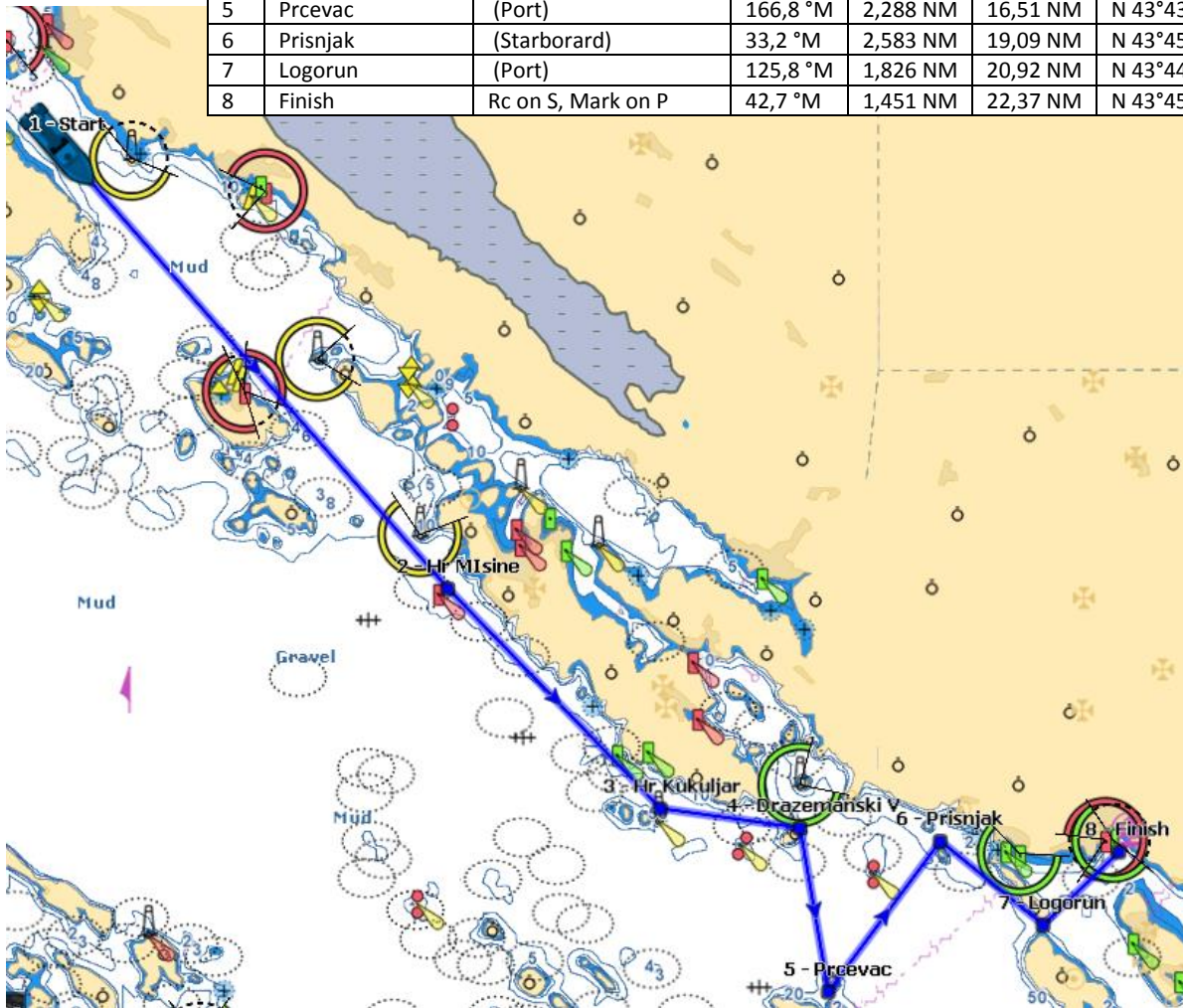
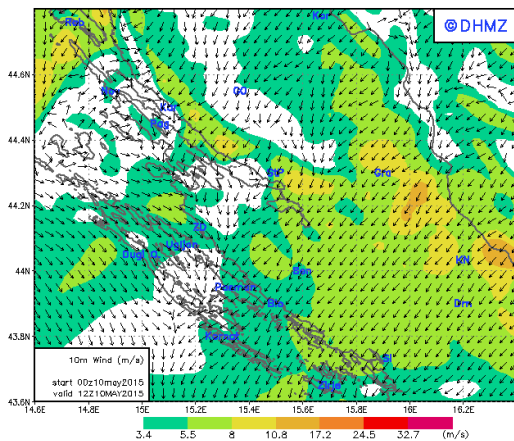


ECC CUP DAY 1
: BIOGRAD –
VODICE START
11:30

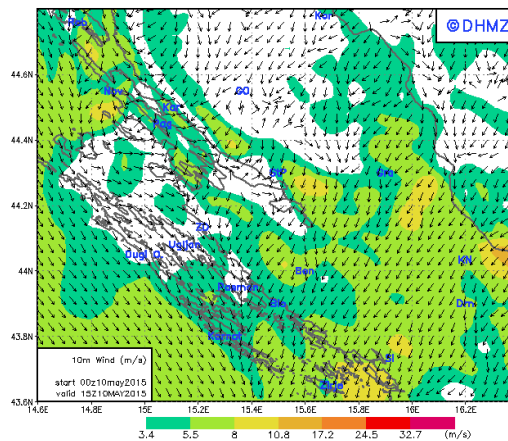
No	Name	Route	HTS	Distance	Total	Aprox position
1	Start	RC on S, Mark on P	°M	0 m	0 m	N 43°54,861'; E 15°26,702'
Possible extra mark(s) as per SI Attachment 1						
2	Hr Mlsine	(Starboard)	135,3 °M	8,076 NM	8,076 NM	N 43°48,792'; E 15°34,071'
3	Hr Kukuljar	(Starboard)	132,6 °M	4,206 NM	12,28 NM	N 43°45,766'; E 15°38,106'
4	Drazemanski V	(Starboard)	94,6 °M	1,939 NM	14,22 NM	N 43°45,499'; E 15°40,757'
5	Prevac	(Port)	166,8 °M	2,288 NM	16,51 NM	N 43°43,244'; E 15°41,296'
6	Prisnjak	(Starboard)	33,2 °M	2,583 NM	19,09 NM	N 43°45,319'; E 15°43,419'
7	Logorun	(Port)	125,8 °M	1,826 NM	20,92 NM	N 43°44,164'; E 15°45,372'
8	Finish	Rc on S, Mark on P	42,7 °M	1,451 NM	22,37 NM	N 43°45,171'; E 15°46,814'



DAa Maslenica 10m Wind on 12 UTC 10MAY2015



DAa Maslenica 10m Wind on 15 UTC 10MAY2015



TCC based on ORC handicap for no spinnaker/genaker sails configuration 2015

Bavaria 42 Match	0,931
Bavaria 45	0,853
Bavaria 46	0,902
Bavaria 47	0,944
Bavaria 50	0,946